



TRANSFORMING DOMINO FORM DESIGNS INTO XPAGES VIA XSLT

PAUL T. CALHOUN
NETNOTES SOLUTIONS



THE PROBLEM



- The fields are always added in alphabetical order versus the order they appear on the Domino Form design. (Fixed in 8.5.1)
- You have to change the control type to match the one on the Domino form when you drag the fields on the XPage from the data palette or they are all added as Edit Box controls. (This is the same except for date fields)
- Computed fields are not brought across at all. (Fixed in 8.5.1)
- There was no way to create Radio or Checkbox keyword fields dynamically (The Same)
- Keyword field values were not brought across at all (The Same)





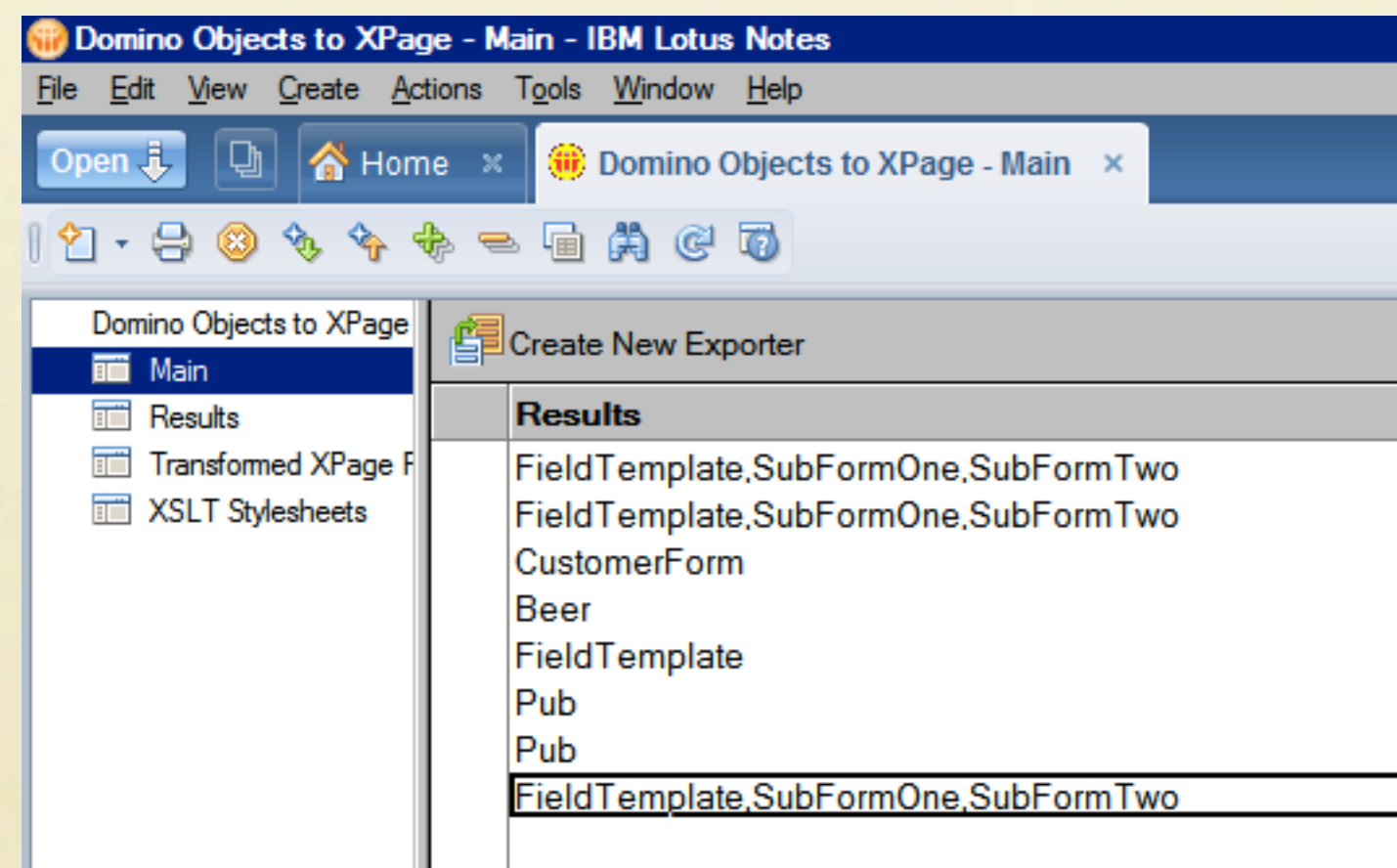
THE SOLUTION



- Transform the Domino Form Designs DXL to the XPages XML via XSLT
- Download the Domino Objects to XPages application from the downloads area on my website
 - <http://www.nnsu.com>
 - Complete Turnkey NSF to Transform DLX to XPage Syntax



OPEN THE DOWNLOADED
APPLICATION IN THE NOTES
CLIENT.
CLICK ON THE “CREATE NEW
EXPORTER” ACTION BUTTON



CHOOSE THE SERVER
CHOOSE THE APPLICATION
CHOOSE THE FORM/SUB-FORMS
CHOOSE THE SHARED FIELDS
CHOOSE THE STYLESHEET
CLICK THE RUN DXL TRANSFORMATION
ACTION IN THE ACTION BAR

Save Run DXL Transformation

Transform DXL to XPage Syntax

Use the following Fields to choose the Forms, Sub-Forms and Shared fields that will be exported as DXL and transformed into XPage syntax.

If the Server name is left blank then the applications returned will be from the Local System.

Once all of the values have been selected click the "Run DXL Transformation" action in the action bar.

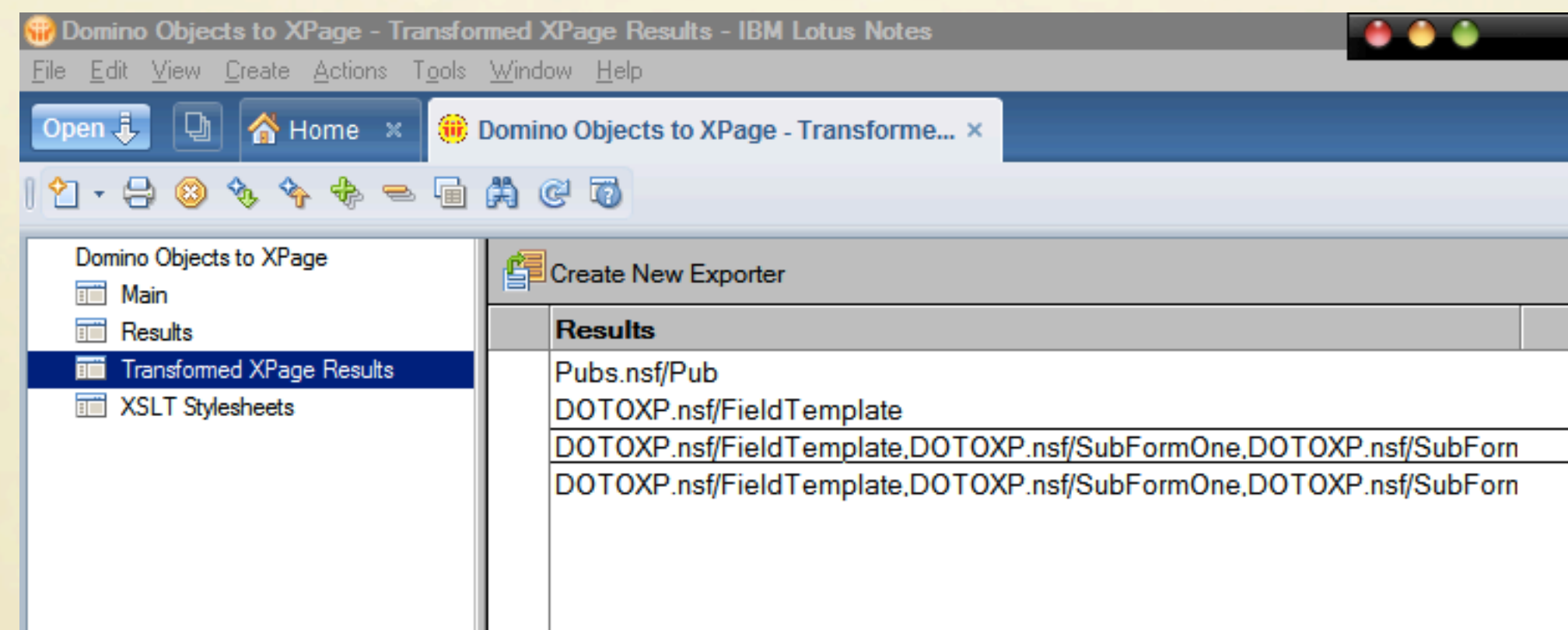
This will transform the Form, Sub-Form and Shared field DXL into XPage XML and store the results in a document in the "Transformed XPage Results" view

Open the created document to copy the transformed XML to an XPage's Source design.

Server Name:	<input type="text"/>
*Application Name:	<input type="text"/>
*Form Names:	<input type="text"/>
Shared Fields:	<input type="text"/>
*Choose Stylesheet:	<input type="text"/>

*Required Fields

OPEN THE LAST DOCUMENT IN THE TRANSFORMED XPAGE RESULTS VIEW



CLICK ON THE “COPY TO CLIPBOARD” BUTTON IN THE LEFT NAVIGATOR

Transformed XPage Results

Database Name:	DOTOXp.nsf
Form Names:	FieldTemplate; SubFormOne; SubFormTwo
Shared Fields:	SharedFieldOne; SharedFieldTwo
Transformed XPage Results:	<pre><?xml version="1.0" encoding="UTF-8"?><xp:view xmlns:xp="http://www.ibm.com/xsp/core" xmlns:dxl="http://www.lotus.com/dxl"> <xp:this.data> <xp:dominoDocument var="document" formName="FieldTemplate"/> </xp:this.data> <xp:table> <xp:tr> <xp:td> <xp:label value="TextField" id="TextFieldLabel" for="TextField"/> </xp:td> <xp:td> <xp:inputText id="TextField" value="#{document.TextField}" defaultValue="#{javascript:@UserName}"/> </xp:td> </xp:tr></pre>

Copy the code in this field.

Open an XPage in the Designer client to the Source view and replace the entire contents of the source view with this code.



CREATE A NEW XPAGE



- Switch to “Source” tab
- Delete the existing XML
- Paste in the new XML
- `<ctrl><shift><F>` to format the code
- Switch back to “Design” tab
- Save and Preview the New XPage



LIVE DEMO !!!!!

DOWNLOAD TURNKEY
APPLICATION FROM MY
WEBSITE
TOTALLY FREE
MY GIFT TO YOU !!!!!!!!

WWW.NNSU.COM

**COMPLETE INSTRUCTIONS
AND WALK THROUGH
AVAILABLE ON THE XPAGES
BLOG**

WWW.XPAGESBLOG.COM

SHAMELESS PLUG !!
I'M AVAILABLE FOR
TRAINING, CONSULTING AND
MENTORING ON DOMINO,
JAVA, XML, WEB SERVICES
AND XPAGES !!!

**PLEASE REMEMBER TO FILL
OUT
THE EVALUATIONS**

QUESTIONS ?

PCALHOUN@NNSU.COM